



# Housing Outcomes in Harford County

## Rates of individuals who own vs. rent ~

	<u>Home Ownership</u>	<u>Home Rental</u>
Fallston	94.4%	5.6%
Forest Hill	86.7%	13.3%
Bel Air 21015	84.0%	16.0%
Bel Air 21014	82.6%	17.4%
Edgewood	68.4%	31.6%
Havre de Grace	67.2%	32.8%
Aberdeen	65.2%	34.8%

## Rental Unit Affordability, 2010 ^

2-Bedroom Apartment	\$1,203
Income Needed	\$48,120
Hourly Wage Needed	\$23.13
% Change since 2000	68%
Full-time jobs needed at minimum wage	3.2

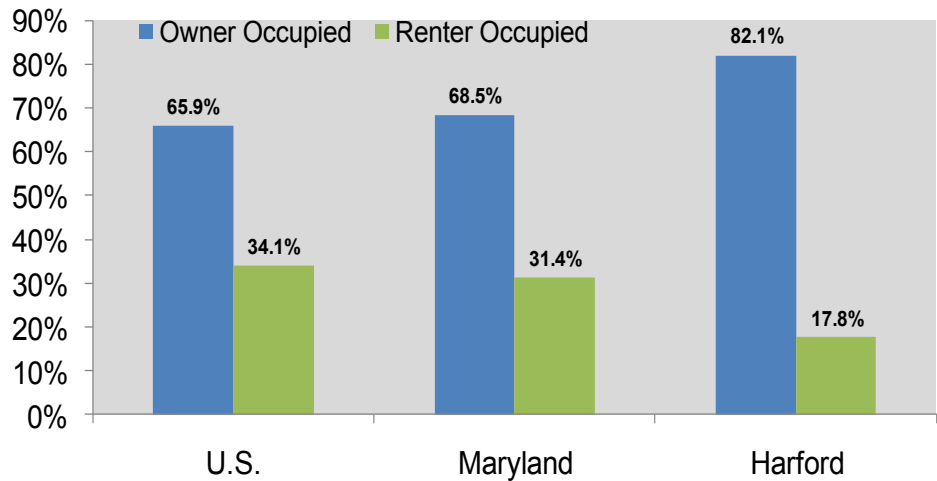
## Rental Unit Affordability, 2010 ^

### Fair Market Rent

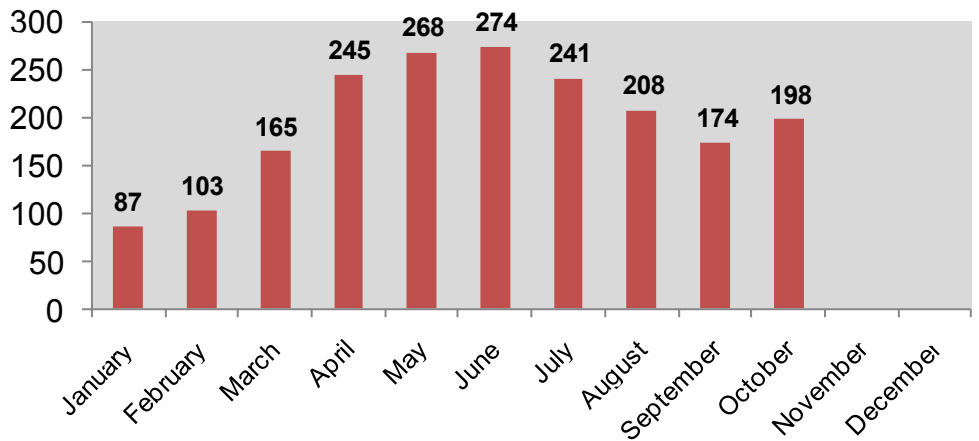
<u>County</u>	<u>2 Bedroom</u>
Anne Arundel	\$1,203
Baltimore County	\$1,203
Carroll	\$1,203
Cecil	\$1,095
Frederick	\$1,474
Harford	\$1,203
Howard	\$1,203
Maryland	\$1,271



## Home Ownership Rates (U.S. Census Bureau, 2009)



## Harford County Real Estate Trends—Total Units Sold (Metropolitan Regional Information Systems, 2010)



## Harford County Real Estate Trends (Metropolitan Regional Information Systems, 2010)

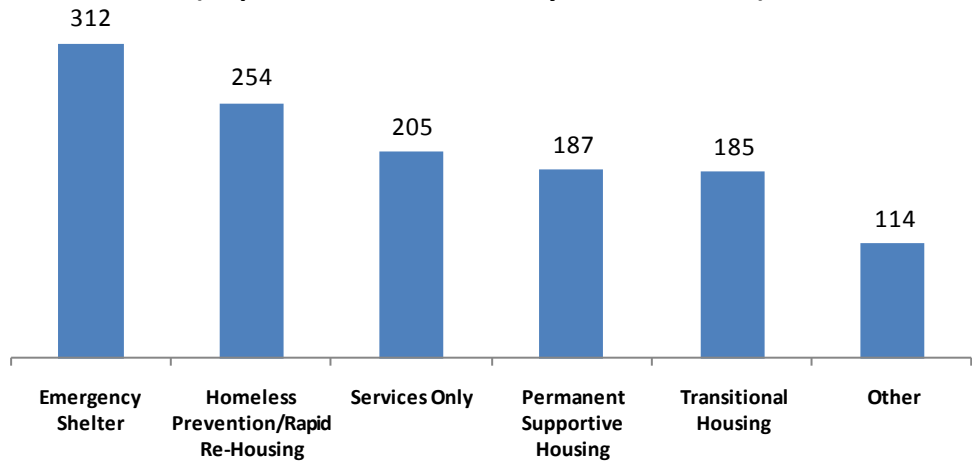
	2007	2008	2009	% Change 2007 to 2009
Avg. Sold Price	\$296,884	287,275	268,301	- 9.8%
Total Units Sold	3,064	2,321	2,432	- 16.5%
Avg. Days on the Market	100	132	129	29.7%
Avg. List Price	\$312,035	\$312,055	\$290,990	- 6.7%





# Housing Outcomes in Harford County

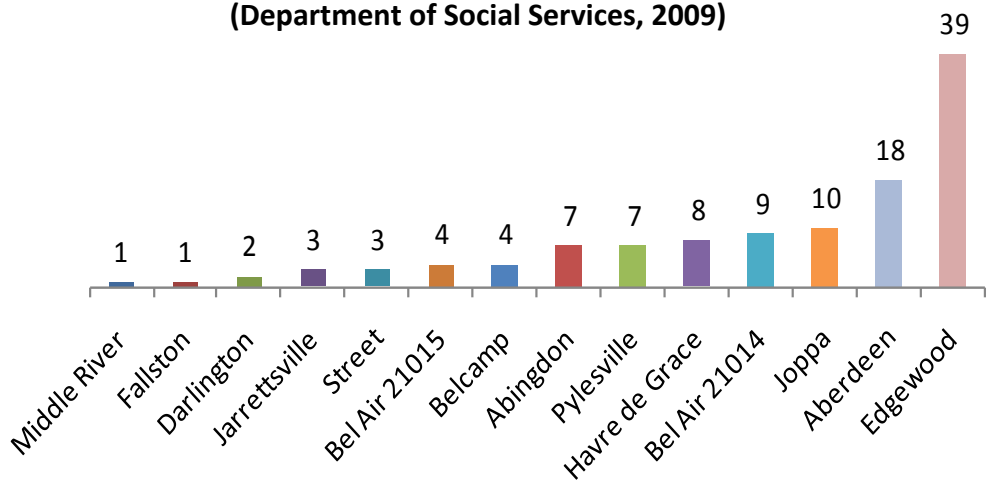
**Number of Individuals that Accessed Homeless Services  
(Department of Community Services, 2010)**



**Individual's accessing homeless services, 2010<sup>+</sup>**

Age	Number
0-5	94
6-12	68
13-17	47
18-24	84
25-44	270
45-61	211
62+	9
Age Unspecified	21

**Foster Care Placements  
(Department of Social Services, 2009)**



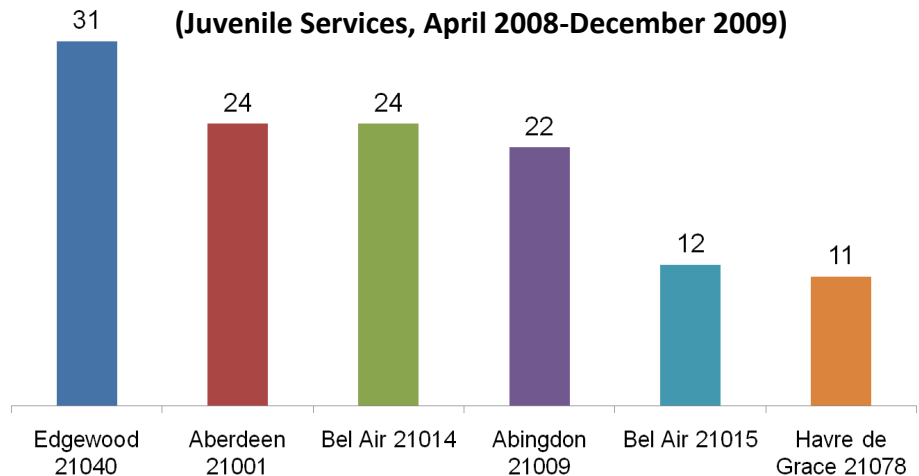
**Total number of foster care**

Year	Number of youth
2007	170
2008	174
2009	116

**DSS Child Out of Home**

County	% of population under 21
Carroll	0.08%
Howard	0.10%
Anne Arundel	0.13%
Baltimore County	0.29%
Harford	0.43%
State of Maryland	0.55%
Baltimore City	2.76%

**Juvenile Service Out-of-Home Placements  
(Juvenile Services, April 2008-December 2009)**



**Sources:**

- ~ Claritas, 2009
- ^ National Low Income Housing Coalition, 2010
- + Homeless Management Info. System, 2010
- \* Harford County Department of Social Services, 2009

